

CHANGE IS IN YOUR HANDS

INTERNATIONAL PROSPECTUS
2019-20



INTERNATIONAL PROSPECTUS 2019-20



FIND YOUR LIFE-CHANGING FUTURE-SHAPING CAREER-DEFINING HORIZON-SHIFTING MOMENT

CONTACT THE UNIVERSITY IN YOUR HOME COUNTRY

EAST ASIA

BEIJING OFFICE

University of Sunderland
111 First Floor
Xihua Science and Technology Mansion
No. 8 Tuofangying South Road
Chaoyang District, Beijing City
P.R. China
Tel: +86 (0)10 8514 4556
Email: china.office@sunderland.ac.uk

SHENZHEN CONTACT POINT

Tel: +86 138 2368 4490
Email: southchina@sunderland.ac.uk

GUANGZHOU CONTACT POINT

Tel: +86 1358 0534 259
Email: yanting.southchina@sunderland.ac.uk

SHANGHAI CONTACT POINT

Tel: +86 1363 6620 756
Email: lisa.southchina@sunderland.ac.uk

HANGZHOU CONTACT POINT

Tel: +86 1875 817 3753
Email: gina.wang@sunderland.ac.uk

SOUTH EAST ASIA

SOUTH EAST ASIA OFFICE

Suite A-07-09, Empire Tower 1
Empire Subang
Jalan SS/16-1
47500 Subang Jaya
Selangor, Malaysia
Tel: +603 5632 5873 / +603 5632 4873
Email: malaysia@sunderland.ac.uk

YOUR LOCAL CONTACT

VIETNAM

HANOI OFFICE

University of Sunderland
257 Giai Phong, 2nd Floor Hoa Phat Building
Dong Da District
Hanoi, Vietnam
Tel: +84 (04) 3623 1176/75
Email: Hanoi.vietnam@sunderland.ac.uk

HO CHI MINH OFFICE

University of Sunderland
307A Nguyen Trong Tuyen
Phu Nhuan District
Ho Chi Minh, Vietnam
Tel: +84 (0)8 62610411
Email: hcn.vietnam@sunderland.ac.uk

EUROPE AND EASTERN MEDITERRANEAN

EUROPE AND EASTERN MEDITERRANEAN OFFICE

11C Dekeleias Avenue
Nea Halkidona 143 43
Athens, Greece
Tel: +30 210 921 2885
Email: europe@sunderland.ac.uk

SOUTH ASIA OFFICE

SOUTH ASIA OFFICE

5th Floor, Harmony Plaza
Building No/ 3-6-387/D
Himayatnagar, Hyderabad
Telangana, India
Pin: 500029
Tel: +91 40 65766777
Email: southasia@sunderland.ac.uk

AFRICA

NIGERIA / SUB SAHARAN AFRICA / WEST AFRICA

Tel: +234 803 307 5007
Email: john.iyekowa@sunderland.ac.uk

YOUR MOMENT HAS ARRIVED

So you're thinking of studying in the UK at the University of Sunderland? This could be a life-changing decision.

Students from over 100 countries call Sunderland home, and our qualifications are recognised all over the world. Your time here will shape your life and career, opening up opportunities for you globally.

As well as finding a full list of courses, we'll tell you everything you need to know about our first-class facilities, accommodation options and support networks – plus all the amazing things going on in our friendly campuses.

This is a University that's bursting with opportunity. So wherever in the world you're coming from, and wherever you want to go, this could be the moment it all falls into place.

READY TO APPLY?

Go to sunderland.ac.uk, search for your course and click 'Apply Now' or apply through your local agent.

TO FIND OUT MORE

+44 (0)191 515 3000

Email: student.helpline@sunderland.ac.uk

Live Chat on our website sunderland.ac.uk



MEDICINE — NEW FOR 2019

We're excited to launch our MBChB
Medicine course for trainee doctors

EDUCATIONAL EXCELLENCE, RESPECTED WORLDWIDE

We consistently go beyond the
national quality standards for UK
higher education



WE WELCOME THE WORLD

**SUNDERLAND IS THE 'MOST
INCLUSIVE UNIVERSITY IN THE UK'**

SOURCE HESA 2015-16



**SUNDERLAND
LONDON
HONG KONG**

WE'RE LOCAL, NATIONAL AND GLOBAL

GET A DEGREE BY THE SEA

Find us in a uniquely
beautiful coastal location



WORLD-CLASS AT CARING

5th in the UK for nursing
The Guardian University League
Tables 2018

CONTENTS

Our City	07
Our University	18
A Global University	24
Accommodation	26
Student Life	28
Preparing you for Employment	34
International Alumni	37
Our Reputation	38
Our Academics	40
English Skills	42
Cambridge Education Group Programmes	44
Scholarships and Fees	45
Entry Requirements	47
How to Apply	48
Course Listings	50
Your Local Contact	58



THE MOMENT YOU...

BEGIN YOUR JOURNEY.
DISCOVER A NEW CULTURE.
EXPLORE A DIFFERENT COUNTRY.
CREATE FRIENDSHIPS
AND CONTACTS FOR LIFE.

At the University of Sunderland, a thousand life-changing moments are waiting for you. You'll become part of a global community, experiencing life in one of the UK's friendliest universities. As well as achieving an internationally recognised qualification, you'll gain the skills, experience and knowledge you need to succeed anywhere in the world.

WHAT MAKES A MACKEM?

A MACKEM IS SOMEONE FROM SUNDERLAND.

But what does being a Mackem really mean? Supporters of Sunderland A.F.C. team call themselves Mackems, but it's not just a football thing. One explanation dates back to Sunderland's shipbuilding history and the local pronunciation of "make them" becoming "Mackem".

Wherever the term came from, if there's one thing Mackem stands for these days, it's friendliness.

Whether we're welcoming people from all around the world at our University, making sure our city is accessible and open to everyone, or drawing the crowds with our vibrant arts and culture scene, our reputation as one of the friendliest places in the North East proceeds us.

YOUR MACKEM TRANSLATION GUIDE

A few words you'll get used to hearing...

HA'WAY – "COME ON" OR "LET'S GO"

MARRA – YOUR BEST MATE

AYE – "YES"

NOR – "NO"

DINNIT – "DON'T"

A'REET – "ALRIGHT"

CLAYS – "CLOTHES"

THIS IS SUNDERLAND

The birthplace of the Mackems. The city by the sea. The place where lives are changed, futures are shaped and stories are rewritten. For our students, Sunderland is the place where lifelong friendships are forged and unforgettable moments are made. Many of our graduates love it so much, they end up calling it home.

Wearmouth Bridge, Sunderland

OUR CITY BY THE SEA

Sunderland is a place that's as proud of its past as it is excited about its future. Situated on the North East coast of England, the city traces its roots back to Anglo Saxon times – and is currently undergoing unprecedented growth.

Over £1 billion is being invested in exciting projects across the city, from the 'Northern Spire', an iconic new bridge across the River Wear and a vibrant Cultural Quarter near City Campus, to attractive public space and seafront landscaping. And with even more ambitious plans in the pipeline, this really is Sunderland's moment.

Our cultural heart.
Discover the Northern
Gallery for Contemporary
Art at the National
Glass Centre.



National Glass Centre

EXPLORE AND ENJOY

From big events to unique attractions like the National Glass Centre and Northern Gallery for Contemporary Art, there's always something to do in Sunderland.

Highlights include:

- Sunderland's International Airshow, a three-day spectacle in the skies which attracts close to one million visitors to the coastline from Roker to Seaburn
- The Sunderland Illuminations, which light up the Autumn evenings every year
- Sunnyside Live, the summer-long festival of music and dance which brings in visitors from across the country
- A string of vibrant independent bars, pubs and coffee shops hosting regular live music nights, reading and writing groups, craft clubs and more



Sunderland International
Airshow



MAKE FRIENDS FROM AROUND THE WORLD

Whether you're looking for vibrant nightlife, cosy pubs serving cask ales, cocktail bars or independent coffee shops, Sunderland's busy City centre offers plenty of places to make, meet and spend time with friends.

There's also our internationally renowned underground music scene, as well as a great selection of restaurants and pubs serving food to suit all sorts of tastes and budgets.

Everyone's your Marra*

Join a 20,000-strong community of friendly Mackems.

*That means best mate

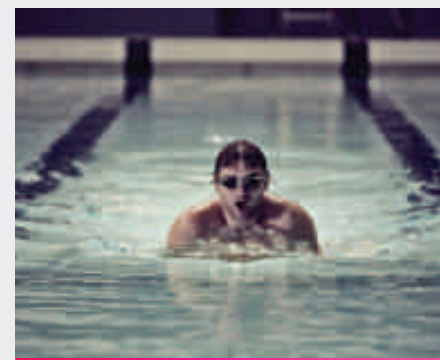
Sunderland Wall is 23m high with over 900m² of climbing and bouldering.

A WORLD OF ACTIVITY



Whether you like to swim, ski, run, cycle, climb, sail, surf, train indoors or outdoors, there isn't much you can't take part in at Sunderland.

As well as our excellent gym and sports provision on campus, you can also get involved in sports like tennis, badminton, football and squash. Or for something a bit different, why not give martial arts or trampolining a try?



Sunderland's 50m swimming pool

A BREATH OF FRESH AIR

Feeling brave? Dive in. Try surfing, windsurfing, sailing, scuba diving and climbing locally.

Ships ahoy!

The Tall Ships Race came to Sunderland in 2018. 1.5m visitors enjoyed the four-day regatta.



SURF'S UP!

Sunderland doesn't just have great beaches – it has great surf spots too. The weather might not be tropical, but the waves are up there with some of the best.

FOR THE ADVENTUROUS

Discover Adventure Sunderland, a £1m marine activity centre on Roker Beach. However, if you prefer dry land, mountaineering, archery and abseiling are also on offer.

Sunderland's twin Blue Flag Award winning beaches attract walkers, surfers, runners and cyclists wanting to enjoy the fresh sea air, while the Marina Complex provides top-class facilities all year round.

We share our coast with both South Tyneside and Durham's Heritage Coast, where you can see stunning coastal wildlife as well as the beautiful countryside of Northumberland, Country Durham and the North Yorkshire Moors.

Beyond the beach, the city has acres of green space including local and country parks, and wildlife reserves such as Rainton Meadows and Washington Wetland Centre. So you'll always find somewhere to explore.

Hit the beach

At Roker and Seaburn.



WHILE YOU'RE HERE

Sunderland is an ideal base from which to explore the North East region and access some of the UK's best natural, heritage and cultural attractions. In 30 minutes you can visit historic Durham and its magnificent cathedral and castle, or enjoy Newcastle's retail offer, see the cultural delights of Sage Gateshead or take in acclaimed art exhibitions at the BALTIC Centre for Contemporary Art.

To find out more about the North East region visit visitnortheastengland.com

Durham Cathedral



Angel of the North, Gateshead



Lindisfarne

Sunderland's Washington Old Hall was home to the family of George Washington, first President of the USA. The red and white colours of the family crest feature in the American flag and influenced the Sunderland AFC football strip.

FANCY A BIT OF SHOPPING?

Sunderland's Bridges Shopping Centre and a range of quirky, independent shops are right on your doorstep. For something further afield, try Gateshead's Metrocentre or Eldon Square in Newcastle. If your style is a little more offbeat there are plenty of vintage shops or arts and crafts outlets like Newcastle's Biscuit Factory for discovering rare finds.

STEEPED IN HISTORY

There's a world of history to uncover in the North East – you can immerse yourself in the past. We have some of the best-known castles in the UK – try the imposing Bamburgh Castle or the spectacular ruins of Dunstanburgh.

Scenes from the Harry Potter films were shot at Alnwick Castle and the Gardens there are a day out in their own right.

Further afield in the North of our region, visit the windswept holy island of Lindisfarne, cut off at high tide, or the bustling town of Whitby in the south, known for outstanding fish and chips and its association with Dracula.

Bamburgh Castle



GETTING HERE

Set on the North East coast, right where the River Wear joins the North Sea, Sunderland is connected to the rest of the UK by excellent road and rail links. You can reach us via air, rail and road – as well as sea!

Once you arrive, getting around is easy with plenty of local buses and the Tyne and Wear Metro, as well as a good network of cycle routes and public footpaths.

RAIL

You can travel on a direct train from London Kings Cross to Sunderland in three hours, with many trains also calling at Hartlepool, Eaglescliffe, Darlington, Northallerton, Thirsk, York and Peterborough.

VIRGIN TRAINS EAST COAST
virgintrainseastcoast.com

NORTHERN RAIL
northernrailway.co.uk

GRAND CENTRAL
+44 (0)844 811 0071
grandcentralrail.com

SEA

DFDS Seaways operate daily crossings from Ijmuiden in Holland. Travelling the 12 miles from the International Passenger Terminal at North Shields to Sunderland takes about 25 minutes by car or approximately an hour by public transport.

DFDS SEAWAYS
dfdsseaways.co.uk

AIR

Sunderland is accessible by major airlines through Newcastle International and Durham Tees Valley airports. It takes approximately an hour to travel direct to the University of Sunderland from Newcastle International Airport on the Tyne and Wear Metro service.

NEWCASTLE INTERNATIONAL AIRPORT
+44 (0)871 882 1121
newcastleairport.com

DURHAM TEES VALLEY AIRPORT
+44 (0)871 224 2426
durhamteesvalleyairport.com

INTERNATIONAL CONNECTIONS
Via Dubai (daily flights to/from Newcastle International Airport)
emirates.com

EUROPEAN CONNECTIONS
Via Amsterdam Schiphol airport
schiphol.nl

COACH

Park Lane Interchange is about a ten minute walk from City Campus and is the city centre's main bus station, where local buses and national coaches pick up and drop off.

NATIONAL EXPRESS
+44 (0)871 781 8181
nationalexpress.com

BUS

Sunderland has excellent bus networks serving Sunderland and the surrounding area including Newcastle and Durham. The Sunderland Connect (700) bus is free for University of Sunderland students with a valid student ID and connects City and Sir Tom Cowie campuses with halls of residence.

METRO

The Tyne and Wear Metro light-rail service is an easy means of getting around Sunderland, with trains running to and from Sunderland approximately every 12 minutes. There are direct links to Newcastle Central Station (30 mins) and Newcastle International Airport (59 mins).

For timetables and information on the Tyne and Wear Metro and all local bus services please visit:

nexus.org.uk/bus
nexus.org.uk/metro
or call +44 (0)191 202 0747

PARKING

Sunderland has over 3,000 car parking spaces making it easy to access attractions, events, green spaces, cafés, restaurants and entertainment spots.

GETTING AROUND



Wherever you're coming from and however you get here, you'll receive a warm welcome to Sunderland.

LIFE ON CAMPUS

CitySpace

Our courses and facilities are spread across two campuses, one in the heart of the city, and the other on the banks of the River Wear. Whether you study by the sea or in the centre of the city, Sunderland's incredible facilities mean student life is made up of unforgettable experiences.

CITY CAMPUS

Right in the heart of Sunderland – with everything you could need on the doorstep.

SUBJECTS:

pharmacy; pharmaceutical sciences; medicine; nursing; paramedic sciences; health and clinical sciences; psychology; art; design; photography; fashion and performance.

WHAT ELSE?

This city centre campus houses CitySpace, our iconic sports and social facility. The Sciences Complex and Shackleton House are home to our health and science related courses. Other buildings include Murray Library, Priestman Building, and Hope Street Xchange, a contemporary workspace for innovation-led businesses and entrepreneurial student projects.

MEDICINE: FROM 2020 WE WILL BE ACCEPTING OVERSEAS APPLICATIONS

Subject to entry requirements.
See website for further information.



Sciences Complex

SCIENCES COMPLEX

An outstanding multi-million pound, industry-compatible science and health facility, with the recent addition of a unique Living Lab featuring the most advanced sector simulation equipment.

- Industry-standard research and teaching laboratories
- Cutting edge testing equipment across specialisms
- Academic links with world-leading organisations including Pfizer and GlaxoSmithKline

SHACKLETON HOUSE

Home to Psychology, Paramedic Sciences and Nursing, this complex has recently seen a multi-million pound investment.

- Mock wards
- Consultation rooms
- Mock patient-transfer suite
- Industry-standard positive pressure isolation room
- Patient Diagnostic Suite
- State-of-the-art simulation facilities



YUNO KIDO, FROM JAPAN
BA (HONS) ENGLISH LANGUAGE AND LITERATURE

“

Step by step I've become more confident since coming to Sunderland. I've enjoyed the course, had a great chance to improve my English and I have enjoyed swimming and participating in various sports. When I graduate I would like to work in the publishing or advertising industry, making the most of what I have learned in my degree. I couldn't be any more excited for my next chapter as an undergraduate student at Sunderland.

”

MY MOMENT:

"I took part in an International Fashion Show in my foundation year!"



Hope Street Xchange

HOPE STREET XCHANGE

This is where new businesses are born. It's also home to FabLab Sunderland, the North East's first digital fabrication laboratory, and the Enterprise Place, where students and graduates can access free support and advice.

- 3,500m² of workspace
- 30 offices
- 7 workshops
- Research facilities

THE GATEWAY

One of the busiest buildings on City Campus, The Gateway is where you'll find the vast majority of our support services.

- Financial support
- Careers advice through Sunderland Futures
- Counselling
- Accommodation
- Health and wellbeing

PRIESTMAN BUILDING

Discover state-of-the-art equipment in an environment filled with creative thinkers at the historic Priestman building, which has recently undergone a £6.5m transformation.

- Three art and design galleries
- Art, design and fashion studios
- Wood, metal and print workshops
- Performing arts spaces
- Wacom Cintiq design studio



NORTHERN CENTRE OF PHOTOGRAPHY

Based on the City Campus, the Northern Centre of Photography is one of the best in the country.

- Dedicated chemical and digital darkrooms
- Fully-equipped studios
- Digital suites
- Video, sound editing and screening facilities

CITYSPACE

A £12m sports facility at the heart of City Campus, offering state-of-the-art fitness equipment and world-class athlete support.

- Six-badminton-court sports hall
- Technogym fitness suite
- Functional training spaces
- Sports massage and injuries centre
- Multi-purpose room
- Indoor climbing wall
- Event and exhibition space
- Café and social area

SIR TOM COWIE CAMPUS AT ST PETER'S

An impressive riverside campus on one of the UK's most beautiful stretches of coastline.

SUBJECTS:

business, law and tourism; education and society; computer science; engineering and advanced manufacturing; media and communications.

WHAT ELSE?

This campus includes The David Goldman Informatics Centre, often referred to as a 'computing cathedral'.

You'll also find The David Puttnam Media Centre, where students studying journalism, culture, new media production, film, TV, animation and radio can take advantage of industry-standard equipment in 4,600m² of studios, workshops and editing suites.



DAVID PUTTNAM MEDIA CENTRE

Packed with industry-standard media equipment and technology, The David Puttnam Media Centre is home to the subjects of journalism, TV, video, radio and new media production, animation, film studies and cultural studies.

With production facilities including two 4K TV studios, six radio stations and a HD cinema, it's no wonder that the centre is also the headquarters of local television station 'Made in Tyne & Wear', as well as a base for a team of BBC journalists.

Our latest addition is the mediaHUB – an innovative digital publishing and broadcasting space which is home to our five student digital publications: Spark, Fashion North, Northern Lights, SR News and SportsByte.

- BROADCAST-STANDARD TV STUDIOS
- STATE-OF-THE-ART EDITING SYSTEMS
- DIGITAL AND POST-PRODUCTION FACILITIES
- LOCATION RECORDING KITS
- CINEMA SPACE
- FULLY-EQUIPPED RADIO STATIONS
- VOICEOVER BOOTHS
- INDUSTRY-LEADING SOFTWARE
- WACOM CINTIQ DESIGN STUDIO



Sir Tom Cowie Campus at St Peter's

THE DAVID GOLDMAN INFORMATICS CENTRE

Home to the Faculty of Technology and the Faculty of Education and Society, this building has benefited from a recent investment in our engineering facilities and has over 240 computers available for use.

THE PROSPECT BUILDING

Situated on the bank of the River Wear, The Prospect Building has been the focus of a £1.25m redevelopment project to ensure that it can meet the needs of our students. It includes the Sir Tom Cowie Campus library, as well as a Gateway similar to the one at City Campus.

THE REG VARDY CENTRE

A self-contained teaching and learning facility which houses the disciplines of business, law, tourism, culture, and social sciences, and is also home to the University's Law Clinic.

NATIONAL GLASS CENTRE

As one of the few Universities in the UK teaching in this area, we are proud to be a centre of excellence in glass and ceramics. Our National Glass Centre has some of the best facilities available.

- Refurbished student and gallery spaces following a £3.7m investment
- Spaces for artist designer makers
- Northern Centre for Contemporary Art gallery
- International exchange program
- World-leading expert demonstrations



THOMAS CEPE, FROM THE CZECH REPUBLIC

ENGINEERING GRADUATE

Composite Design Engineer,
Ferrari F1, Modena, Italy

“

I chose the University of Sunderland because of its facilities and its connections with industry. I enjoyed my course which was very technical and practical, and the facilities allowed me to turn my designs into a reality. The general support, standard of lectures and workshops was at a high level.

I loved that Sunderland is close to the coast, and Newcastle and Durham. I made friends with other international students and learnt about different cultures. The Students' Union's sport and night life allowed me to socialise with people outside of my course.

”

MY MOMENT:

“A highlight was my work placement in motorsport. This provided me with a clear direction, and the desire to pursue a career as a Design Engineer in motorsport. I now specialise in chassis design for F1 cars.”

A GLOBAL UNIVERSITY

STUDY ALONGSIDE STUDENTS FROM AROUND THE WORLD

As an international student in Sunderland, you'll be in good company. We have one of the largest overseas student populations in the UK, so you'll be learning alongside students from over 100 countries. We've delivered the same high-quality courses offered at Sunderland through our international partners across the world for decades. Your international perspective will help enrich the learning experience for others, and you'll benefit too from the diversity of the students around you.



Central district, Hong Kong



AROUND THE WORLD

We work with over 18 educational partners around the world to deliver our courses to more than 7,000 students in a huge range of countries including Malaysia, Singapore, Trinidad and Tobago, and Kenya.

LONDON

Situated right at the heart of London's vibrant financial district, our London location offers courses in business, management and finance, tourism, nursing and health and English for Academic Purposes to UK, European and International students.

Go to london.sunderland.ac.uk

HONG KONG

With a substantial track record of educating students from Asia, our links with our Asian alumni are becoming even stronger as we have established a major presence in this hugely influential region. The University of Sunderland's campus in the Central district of Hong Kong firmly places us at the heart of one of the region's most exciting cities, where we deliver a large range of business and tourism courses.

Go to sunderland.edu.hk

HELPING YOU SETTLE IN

Living with other students is a brilliant way to immerse yourself in the university experience. It could be the place you meet friends for life.

If this is your first time studying at Sunderland, you're guaranteed a room in university accommodation, where you'll have everything you need to work, play and live in a home away from home.

- Fully equipped kitchens (crockery and cutlery not included)
- On-site laundry facilities
- Choice of four accommodation sites
- Flexible living arrangements
- Fast, reliable internet
- All-inclusive rent
- Year-round accommodation
- Personal possessions insurance
- Wheelchair access
- Disability support

Want to come and see for yourself? You can visit our accommodation sites on open days or book a tour through the Accommodation Team.

Go to sunderland.ac.uk/accommodationservices

Email: accommodation@sunderland.ac.uk

Or call the Accommodation Office on +44 (0)191 515 2943



Ayah Aldohni



“

I've enjoyed meeting and getting to know new people from different cultures all over the world. I've really enjoyed giving presentations, which have improved my research skills, my confidence and my communication skills.

I work for The Housing Bank for Trade and Finance in Jordan, who are sponsoring my Masters degree, so after graduation I'll return there.

”

**AYAH ALDOHNI, FROM JORDAN
MASTERS IN BUSINESS
ADMINISTRATION**

MY MOMENT:

“Meeting so many new people from different cultures.”

STUDENT LIFE

**Your
Sunderland***

*Students' Union

HELLO FROM YOUR STUDENTS' UNION!

Your Students' Union wants to help you feel like you belong so that you can really make the most of being in the UK. Sunderland is like no place you've ever been and we'd love to help you enjoy the people and places that make it so special! We're here to empower you and help you play an active role in university life, giving you the support you need as you make friends, have new experiences and graduate with the best degree you can!

You're automatically enrolled as a member, for free, as soon as you register on your course. So make sure you make the most of your Students' Union – where you can do all this, and more.

- Volunteer
- Represent students on your course
- Get involved in events and activities
- Find free, independent, confidential advice and support
- Share your views and raise concerns
- Team up with an SU Buddy or become a buddy yourself
- Get involved in campaigns which make real changes to student life
- Gain valuable career skills and experience
- Find funding for the things that matter to you
- Join one of our many societies, from Chinese to Atlas Theatre Group. There's something for everyone!

FIND OUT MORE ONLINE

Learn about our societies: sunderlandsu.co.uk



TINGTING ZHAO, FROM CHINA
PHD HUMAN COMPUTER INTERACTION
 Senior User Researcher,
 Government Digital Services,
 The Cabinet Office

“

My Chinese university had an exchange relationship with Sunderland, and I thought it was a good opportunity for me to go abroad. I didn't have any particular career plan in my mind, but my module leader encouraged me to pursue a career in Human Computer Interaction, which proved to be the perfect fit for me.

My lecturers were supportive and approachable. My English was rather poor when I joined the University of Sunderland, but the lecturers were patient and I never felt nervous about asking them questions. I also made lots of friends from different nationalities while I was studying here.

”

MY MOMENT:

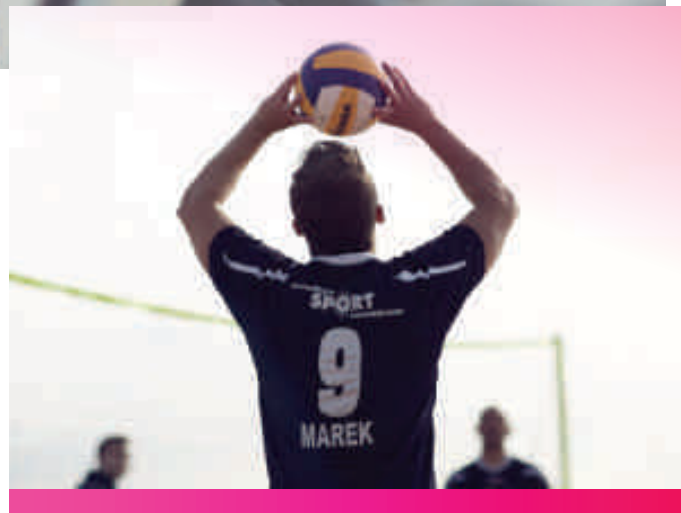
“Becoming a parent for the third time in October 2015 was a huge life-changing event which spurred me on to thinking about the future for myself and my family.”

THE MOMENT YOU

**RISE TO THE CHALLENGE.
BE PART OF THE TEAM.
EXPRESS YOURSELF.
EXPLORE THE CULTURE.**

SPORT IS A WAY OF LIFE IN SUNDERLAND

Whether you're a serious competitor or just love taking part, you'll find so many opportunities to watch, play, coach and study sport. Try something you already know, or take up something completely different – whatever the sport, it will be a great way to make new friends.



- Over 40 sports teams competing in the British Universities and Colleges Sport (BUCS) Leagues
- Our CitySpace sports facility has a state-of-the-art fitness suite, sports hall, sports massage clinic, six court badminton hall, conditioning room, a 23m indoor climbing wall and a multi use sports facility on the Sir Tom Cowie Campus
- We provide funding for talented individuals through our Elite Athlete scholarship scheme
- Our Sport Career Academy offers support with health and wellbeing, coaching, officiating, events and media
- As a coastal city, you can enjoy surfing, windsurfing, sailing and scuba diving
- Sunderland also offers an impressive 50m swimming pool, 110m dry ski slope, LTA accredited tennis centre, athletics track, marina and water sports centre

PREFER TO WATCH?

You'll be spoilt for choice. There's football (soccer) in Sunderland, Middlesbrough and Newcastle, cricket at Durham County Cricket Club, basketball with Newcastle Eagles, and rugby with Newcastle Falcons.

OVER 30 CLUBS AND ACTIVITIES TO BE INVOLVED IN

To get the full Sunderland student experience, we recommend you try one of our clubs.

Meet new friends, experience new cultures, represent your University and have some fun.

From netball, dodgeball, American football, basketball, hockey, swimming, martial arts, through to scuba diving, adventure activities and many more...

If you can't find the club you need, why not start one? We are constantly looking to create new clubs to expand the range of things we offer.

FIND OUT MORE ONLINE

See the full list of clubs unisportsunderland.com

For our latest sports reports:

sportsbyte.sunderland.ac.uk



SUPPORTING YOUR INTERNATIONAL EXPERIENCE

When you're a long way from home, it's important that there's always someone you can talk to – whether you need practical, emotional or financial support. So whatever you need, all you have to do is ask. From the moment you apply to the day you graduate, we'll be there to help you.

THE GATEWAY

This is the place to go for advice and support. Some of the friendliest people you'll ever meet will deal with your query directly, or they'll put you in touch with others who can.

As part of The Gateway, you can access our International Student Support (ISS) service. They can help with:

- Tier 4 (General) and Tier 1 Graduate Entrepreneur (GE) visa applications
- Assigning Confirmation of Acceptance (CAS) for Tier 4 visas
- Administrative review support for visa refusals
- Advice on sandwich year placements on Tier 4 visas
- Visa workshops for Pre-Sessional English for Academic Purposes (EAP) students
- Induction presentations to students during enrolment weeks

All advice and support provided is confidential.

FANCY A FRIENDLY CHAT?

The Gateway hold an international coffee afternoon on the last Wednesday of each month.

Visit services.sunderland.ac.uk/gateway

Email: gateway@sunderland.ac.uk

Call +44 (0)191 515 2222/3322

FINANCIAL ADVICE

If you're new to the UK, it helps to get advice on making your money go further. Our Student Financial Advice team can help answer all your questions about the cost of living in the UK, scholarships, budgeting and general money management.

Visit sunderland.ac.uk/studentfinancialadvice

Email: studentfinancialadvice@sunderland.ac.uk

Call +44 (0)191 515 2284/3478

WELLBEING

There's no problem too big or too small for the Student Wellbeing team. They offer a free and confidential service, giving you support to help you manage any difficulties you may experience whilst at University.

- General wellbeing advice and support
- Therapeutic counselling
- Cognitive behavioural therapy
- Mental health support
- Group work
- Sexual health Service (C-Card and STI testing)
- Referrals and signposting
- Campaigns and health promotion
- 24/7 access to online mental health platform Silvercloud

Go to sunderland.ac.uk/wellbeing

Email: wellbeing@sunderland.ac.uk

Call +44 (0)191 515 2933/2940

CHAPLAINCY

The Chaplaincy offers information on the many different places of worship in the area and encourages and supports students and religious groups of all faiths and denominations.

The University's full-time Chaplain co-ordinates a multi-faith team and runs activities for all who wish to explore or affirm their faith.

Email: chaplain@sunderland.ac.uk

DISABILITY AND LEARNING DIFFICULTIES

If you have a disability, the Disability Support Team will work with you to ensure that you have all the learning support you need.

They can even help you apply to University, and make sure you receive any additional funding you may be eligible for.

Go to sls.sunderland.ac.uk/disability/about/

Email: disability.support@sunderland.ac.uk

Call +44 (0)191 515 2933

PREPARING YOU FOR A GLOBAL FUTURE

A UNIVERSITY THAT'S AS AMBITIOUS AS YOU ARE

Your time in the UK will open your eyes to new opportunities and help shape what you do for the rest of your life. Our careers service, Sunderland Futures, is dedicated to helping you develop your potential, gain important skills and discover the experiences that will enhance your employability – wherever your career takes you.

With Sunderland Futures we will help you stand out from the crowd. Whatever your career ambitions, we will give you the opportunities and support you need to make the most of the qualifications and contacts you gain while you're at Sunderland.

- Advice and guidance on your career options
- Support with your CV, applications and interviews
- Access to our online vacancy service where you will find work experience, volunteering, placement and graduate opportunities
- Advice for starting up a business and leadership
- Employer events on-campus and a Professional Mentoring Scheme
- Recognition through the Sunderland Professional Award

We can also help you with:

- Applying for further study either in the UK or overseas
- Searching for graduate employment opportunities in your home country
- Finding for graduate opportunities in the UK
- Understanding regulations for working in the UK or EU

RAUL FERESTEANU, FROM ROMANIA BSC (HONS) COMPUTER SCIENCE

“

I did a placement year with Clicksco as a Junior Software Developer which greatly improved my technical and social skills. I gained experience that will give me an edge when applying for future jobs.

After graduation I have been offered a position at Unified Software working on improving and adding features to their existing products. At some point in the future I'd like to study a Masters part-time.

”

BOOSTING YOUR CONFIDENCE AND EMPLOYABILITY

We can help you develop the all-round skills and qualities that leading employers look for. We'll encourage you to learn from others in your chosen field, support you with work placements, provide backing for entrepreneurial thinking and recognise your achievements in ways businesses will value.

STUDENT MENTORING

Before you join our University community we will link you to a more experienced student already familiar with your chosen subject area in order to help you settle in. As part of your second or third year you too could become a mentor and get formal recognition for your commitment to add to your CV.

PROFESSIONAL MENTORING SCHEME

You'll be matched with a mentor within your field of interest who will work with you in one-to-one sessions, giving valuable insight into what they do and how they got there, and helping you develop an understanding of the skills you'll need to be successful.

WORK PLACEMENTS

Placements put you ahead of the competition and set you on your career path, with experience and insight that will give you a competitive edge in the jobs market. Each faculty has a placement team who will support you in finding the right company.

EXCELLENCE IN ENTERPRISE

The Enterprise Place provides budding student entrepreneurs with the perfect environment to test their ideas and turn them into real businesses. Membership offers students free access to professional workspaces, support from specialist business advisers and mentors, networking opportunities, masterclasses and a start-up skills course.

RECOGNITION FOR YOUR ACHIEVEMENTS

The Sunderland Professional Award (SuPA) rewards you for the skills and experience that you gain through participation in activities outside the lecture theatre. Developed in partnership with employers, SuPA will enhance your future employment prospects by encouraging you to undertake extra-curricular activities and gain new skills and experiences.

UNMISSABLE OPPORTUNITIES

Beyond your studies, there are many ways to enhance your university experience, gain additional accreditation to your qualifications and set your CV apart, such as:

- Our Student Ambassador Scheme
- Spark Sunderland, the University's radio station, TV station and magazine
- The Mooting and Debating Society
- The Blueprint business planning competition
- Formula Student Racing Car building
- A huge range of clubs and societies





Miranda Schwanke

STUDY ABROAD

Looking to enhance your university experience with travel? We can help you if you are:

- An international 'Study Abroad' student planning to come to Sunderland from your home university for one or two semesters
- An international student doing your main degree in Sunderland, but may consider going outside the UK to a partner university for a semester or two during your degree

The internationally recognised Study Abroad programme is playing an increasingly important part in students' university courses across the globe, and many of those who choose a period of studying abroad come to the UK.

You can gain so much from living in another country and, at Sunderland, we do all we can to ensure that you receive a first-class education. We also give you extensive experience of international, national and local culture, which further enriches your social, cultural and academic experiences. Countries include Australia, Canada, USA, Japan, South Korea and a large selection of European countries.

INTERESTED? CONTACT THE STUDY ABROAD TEAM.

Call +44 (0)191 515 2986

Email: study.abroad@sunderland.ac.uk

MIRANDA SCHWANKE
FROM THE USA SPENT TIME AT
SUNDERLAND DURING HER DEGREE
AS A 'STUDY ABROAD' STUDENT

“

I always knew I wanted to go to another country. I come from Watertown, South Dakota, a fairly small town in a small state. I felt like experiencing another culture and being on my own so far away from home was something I needed to do to grow and really put myself to the test.

At my home university, I study Studio Arts with an emphasis in animation. However, I wanted one solid year where I could focus on just animation, which led me to Sunderland. I believe I gained a better sense of professionalism.

I was able to make contacts in my field, and in general expand my knowledge on how to make it in the working world.

Studying in another country was truly amazing. Everything here is so different, but in the end the people are the same all over the world.

You should take part in Study Abroad, even if it scares you a little, because it's that slight fear that will change your life and make your adventure that much more exciting. I can't tell you what exactly you will experience, that part is up to you, but I can say no matter where you go or how long you stay there, experiencing that culture is worth it.

”



OUR INTERNATIONAL ALUMNI NETWORK

With such a large international student network, you can be sure that your Sunderland experience will help open doors for you in countries around the world. Our students have fond memories of their time with us and are keen to support others who've enjoyed being a Sunderland student.

After graduation you become part of the University's Alumni Association, which provides a global network of over 140,000 former students in 32 countries.

You will be able to access alumni branches in places such as: Hong Kong, Malaysia, Nigeria, China, Singapore and Greece, among many others. These run a number of in-country events with the University providing you with an opportunity to extend your professional network.

GIVING SOMETHING BACK

Many of our alumni also continue to support the University by acting as ambassadors, giving careers advice to students and supporting bursaries and scholarships through the Futures Fund.

Our online community enables you to stay involved where you are based in the world. You will benefit from careers advice, mentoring, professional development and access to the University's academic expertise.

By staying involved you can also keep in touch with friends and your department. Our alumni go on to great things and so will you.

**ONCE A SUNDERLAND STUDENT,
ALWAYS A SUNDERLAND STUDENT**

Visit: sunderland.ac.uk/alumni

OUR ACADEMIC REPUTATION TRAVELS FAR AND WIDE

One thing is for sure, if you study at the University of Sunderland, your qualifications will be respected worldwide. We're renowned for teaching overseas students and you'll find our alumni in leading businesses, governments and academic institutions all over the world. Our academic pedigree stretches back to 1901 and we now have over 140,000 alumni around the globe.

AN EXCITING TIME TO JOIN US

In 2019 we will be very proud to launch our five year MBChB Medicine course. This means Sunderland will be the place where a new generation of doctors will begin their training. This builds on our track-record of excellence in medical education, which stretches back almost 100 years. Our aim is to support and complement existing medical provision in the region and add to the diversity of medical schools in the UK.

The University is growing and innovating in many areas. We having recently invested £10m in Hope Street Xchange, our new Centre for Enterprise and Innovation, which includes the region's first FabLab – a digital fabrication space which

includes 3D printers and laser cutters to make (almost) anything! We've also opened the Living Lab to support the teaching and learning of our health sciences courses, including the recently opened School of Nursing. We're looking to expand our facilities further and graduates from the course will help to meet the skills shortages in the National Health Service and improve patient care.

PROVEN EXCELLENCE IN TEACHING

How do you measure the University's academic reputation? A good place to start would be our recent Silver award in the latest national Teaching Excellence Framework (TEF).

The TEF ranking reflects a range of qualities:

- A culture of excellent teaching
- Academic support tailored to the individual student
- Sunderland's excellent engagement with employers in course development
- Students' excellent professional practice through engagement with industrial and community partners

We were also awarded the Quality Mark by the Quality Assurance Agency (QAA), which is only given to higher education providers who have met or exceeded the UK expectations for quality and standards in higher education.



STUDENTS LOVE OUR TEACHING TOO

We've created a great atmosphere for learning, and our students voted us 'Best University in the North East' in the Whatuni Student Choice Awards 2016.

The quality of our teaching is helping our students succeed in the workplace. 93.4% of our UK undergraduate graduates are in work or higher level of study six months after graduation, according to the Destination of Leavers from Higher Education Survey.

RESEARCH EXCELLENCE

In the most recent Research Excellence Framework (REF), which assesses the quality of research in all of the UK's universities, we achieved success across the University.

Ten areas were identified as having elements of 'world-leading' research: Pharmacy, Health and Wellbeing, Advanced Manufacturing and Engineering, Business, Social Sciences, Education, English, History and Art, Design and Media.

Three areas were identified as having elements of 'internationally excellent' research: Computing Software Big Data, Law and Music, Drama, Dance and Performing Arts.

FROM RESEARCHERS TO TEACHERS

All our research staff teach, so you will benefit from the pioneering expertise of our academics. This research is fed into our teaching provision, which means that you will learn the latest techniques and receive the most current information.

EXPERTISE IN YOUR SUBJECT AREA

We have five faculties covering a huge and diverse range of subjects, from business studies, computing and engineering to nursing and pharmacy.

Our academic expertise in a range of subjects is highlighted by results from the latest Guardian League Tables 2019:

- 6th in the UK for Film, Production and Photography
- 2nd in the UK for Hospitality, Events Management and Tourism
- Education climbed 19 places

We also perform very well in the National Student Survey (NSS) and are among the best in the country for assessing and supporting students with their assignments.

According to the latest NSS, 85% of our students feel they receive high quality teaching and 81% of students feel they receive good academic support, which is above the national average. So whatever your subject area, you're sure to find fantastic facilities, world-class research and deep academic expertise.

MEET SOME OF OUR LEADING ACADEMICS

Professor Yonghon Peng

PROFESSOR YONGHON PENG PROFESSOR OF DATA SCIENCE

Developing pioneering ideas for the artificial intelligence revolution

Professor Peng's research areas include Data Science, Artificial Intelligence and Machine Learning. His research has enabled the discovery of new biomarkers for melanoma, breast cancer and male infertility. He is the Chair for Big Data Task Force of IEEE computational intelligence society, a member of Data Mining and Big Data Analytics Technical Committee of IEEE, a member of the Technical Committee on Big Data of IEEE Communications, and a member of Big Data Task Force of China Information Industry Association. He is an associate editor for IEEE Transaction on Big Data, an editorial board member of Journal of Big Data Intelligence, and an academic editor of *PeerJ* and *PeerJ Computer Science*.

DR STELLA SOFIANOPOULOU READER IN OPERATIONS MANAGEMENT

A specialist in the operations that keep today's world moving

Dr Sofianopoulou's main research interests relate to the development, design and implementation of solutions to business applications in Production Planning and Control, Operational Research, Logistics and Supply Chain Management, Optimal Design of Production Systems, Discrete Optimization Methods and Discrete-Event Simulation. She holds a PhD and an MSc in Operational Research from London School of Economics. Dr Sofianopoulou lectured at the Athens University of Economics and Business, and was Professor at the Department of Industrial Management and Technology at the University of Piraeus in Greece. She has published more than 50 research papers in scientific journals and conferences attracting more than 500 citations.

PROFESSOR KEVIN PETRIE HEAD OF THE SCHOOL OF ART AND DESIGN

Delivering innovative thinking about some of the world's most useful materials

Professor Petrie was recognised for his contribution to glass and ceramics teaching and especially postgraduate support with a National Teaching Fellowship from the Higher Education Academy. He is a very experienced PhD supervisor and has worked with research students from the UK, Japan, Korea, USA, and China. He has also examined PhDs in Denmark, Australia, UK, and Sweden. He is Team Leader for Arts, and manages the academic team in the subjects of Glass and Ceramics, Fine Art and Photography. As Professor of Glass and Ceramics his particular interest is 'blending' printmaking and glass and ceramics for creative use and critical writing in glass and ceramics.

DR AHMED FAHEEM SENIOR LECTURER IN PHARMACEUTICS

Developing drugs that will transform vital treatments around the world

Dr Faheem's research interests focus on the use of biodegradable nanoparticles for delivery and targeting of peptides, proteins and siRNA with anticancer and antidiabetic properties. He graduated from the University of Tanta, Egypt, with a BSc (Hons) in Pharmaceutical Sciences, and then a MSc in Pharmaceutical Technology. He gained his PhD in Drug Delivery and Targeting from London School of Pharmacy. He then undertook postdoctoral positions investigating drug delivery systems for pulmonary delivery of anticancer medicines at University of Strathclyde, and for controlled delivery of HIV microbicides at Queen's University Belfast. Dr Faheem was key to establishing a new School of Pharmacy at Ulster University, where he was Course Director for MSc in Pharmaceutical Sciences.

PROFESSOR AHMED ELMARAKBI PROFESSOR OF AUTOMOTIVE COMPOSITES

Leading the way in devising lighter, stronger more sustainable transport materials

Professor Elmarakbi's research interests focus on advanced nanocomposite materials, graphene related materials, energy conversion and storage systems, and multi-functional materials modelling and design. He obtained his PhD in Mechanical Engineering from University of Toronto, Canada. After successful postdoctoral fellowships in Canada and Japan, he moved to the University of Sunderland in 2007, where he is currently Professor of Automotive Composites. He has over 90 plenary lectures, invited talks, and presentations and over 150 peer-reviewed research papers and patents. He recently produced two patents on novel graphene-based nanocomposites and a book *Advanced Composite Materials for Automotive Applications: Structural Integrity and Crashworthiness*. He has extensive experience managing national and international projects with partners from all over the world.

DR SARAH DOBBS LECTURER IN CREATIVE WRITING

An award winning writer at the heart of the University's creative community

Dr Sarah Dobbs is a novelist and short story writer. Her debut novel *Killing Daniel* was nominated for the Guardian Not the Booker Prize and shortlisted for the Cinnamon Press Novel Award. She has a special interest in flash fiction, progressive prose and hybrid forms; the boundaries of reality and fiction, consciousness and narratology, and creative writing in the community. She was a judge for the Word UK's flash fiction competition and is a peer reviewer for *Short Fiction in Theory and Practice*. Sarah is editor of *Prosegression: Journal of Innovative Literature*. She is the organiser of the University of Sunderland/Waterstones Short Story Award.

HELPING YOU IMPROVE YOUR ENGLISH SKILLS

Concerned your English won't be good enough for academic study? No problem, we can help you develop your spoken and written language skills.

IMPROVE YOUR ENGLISH BEFORE YOUR STUDIES BEGIN
Pre-University or Preparatory Courses

If you do not have the necessary English qualifications or would like to build on the qualifications you do have, then you can study English for Academic Purposes (EAP) in the months before your degree course begins.

English for Academic Purposes
Pre-sessional Courses

This scheme of short intensive courses provides you with the language skills needed to succeed in higher education in the UK. Classes focus on the development of skills to use English for study and research purposes: note taking, study techniques, seminar skills, writing essays and reports, planning research projects, making presentations, individual study and group work.

LEARN THE CULTURE TOO
Running alongside all EAP classes is our Social and Cultural Awareness programme. You will study issues of international, national, regional, and local importance via lectures, workshops and field trips to places of interest. If you are applying for full-time study then you are recommended to complete one of our four EAP University Preparation courses to get the most out of your degree studies.

WHEN DO COURSES BEGIN?
Courses start between April-August and end in September and October for September/October degree course start dates. There are also courses starting between September to November for those students who wish to start a degree in January.

A detailed outline is on the website at: sunderland.ac.uk/study/international/entry-language-requirements

STAY IN UNIVERSITY ACCOMMODATION
If you study on any of these courses, you can stay in university accommodation and you are also granted full university status which allows you to access all of the University's excellent facilities and services (e.g. library, internet access).

Please visit: sunderland.ac.uk/international and sunderland.ac.uk/eap

IMPROVE YOUR ENGLISH ALONGSIDE YOUR STUDIES

English for Academic Purposes – In-sessional Provision
We also provide English for Academic Purposes (EAP) and English for Business Purposes (EBS) classes to support you during your studies at the University of Sunderland.

Find out more: visit sunderland.ac.uk and key in the course code CID897. This course is free to those students who are already registered on one of our courses.

ENGLISH FOR ACADEMIC PURPOSES PRE-SESSIONAL COURSES	EAP COURSE A	EAP COURSE B	EAP COURSE C	EAP COURSE D
OVERALL IELTS OR (ELEMENT) AT:	IELTS 4.0 (3.5)	IELTS 4.5 (4.0)	IELTS 5.0 (4.5)	IELTS 5.5 (5.0)
COURSE LENGTH	20 Weeks	15 Weeks	10 Weeks	5 Weeks
SUMMER START	April/May	May/June	June/July	July/August
WINTER START	N/A	September	October	November
COURSE FEE	£3600	£2700	£1800	£900

*Some courses require higher IELTS requirements please see website for more details.



UNDERGRADUATE OR POSTGRADUATE DEGREE OVERALL IELTS 6.0, WITH A MINIMUM 5.5 IN EACH ELEMENT*

NOT QUITE READY FOR UK STUDY? WE'LL HELP YOU PREPARE

GET GUARANTEED ENTRY TO A UNIVERSITY OF SUNDERLAND DEGREE*

We offer a range of high quality courses designed to prepare you for studying at a Sunderland or another UK University. We offer these programmes in partnership with ONCAMPUS and we've been helping international students in this way since 1952.

COULD YOU BENEFIT?

The programmes will help you if you do not currently meet the academic and/or English Language requirements to enter your chosen degree course directly. By completing the programme you will get guaranteed progression* to some of the University's degree courses.

These comprehensive 25-hours per week academic and English programmes prepare you thoroughly for the demands of a UK degree. You'll be taught by specialist staff and will have a personal tutor for regular meetings to help you progress.



CHOOSE YOUR PROGRAMME

We will help you choose the relevant ONCAMPUS programme for your intended level of study.

UNDERGRADUATE FOUNDATION PROGRAMME

Guaranteed progression* to Year 1 of a wide range of undergraduate degrees or the International Year One in Business and Management. The following pathways are offered:

- Business
- Humanities and Social Sciences
- Engineering and Physical Sciences
- Life Sciences

Starts: September or January

Terms: 3

English entry level: from 4.5 IELTS or equivalent

INTERNATIONAL YEAR ONE IN BUSINESS

Guaranteed progression* to Year 2 of selected Business degrees.

Starts: September or January

Terms: 3 or 4 terms

English entry level: from 5.0 IELTS or equivalent

MASTER'S FOUNDATION PROGRAMME

Guaranteed progression* to a wide range of Master's degrees.

Starts: January, April, June or September

Terms: 1, 2 or 3 terms, subject to your level of English on entry and the level required to progress onto your chosen master's degree.

English entry level: from 4.5 IELTS or equivalent
Students with IELTS 4.0 can take a 4 term programme from June or September. English Language Programmes are available from 4.0 IELTS or equivalent.

To find out more visit:

oncampus.global/sunderland

*Guaranteed progression is subject to meeting the specified entry criteria for each University course.

SCHOLARSHIPS AND FEES FOR INTERNATIONAL STUDENTS

Sunderland offers such good value for high quality learning. Our fees are affordable and the cost of living in our region is one of the lowest in the country. You may also be eligible for a scholarship to supplement your own finances.

MAKE YOUR FUNDS GO FURTHER:

- Our competitive fees are guaranteed to stay the same for the duration of your studies
- From accommodation, transport costs and eating out, Sunderland is significantly cheaper than many other parts of the country
- Use our free Campus Bus service which picks you up from your accommodation and drops you off at either the City Campus or the Sir Tom Cowie Campus

SCHOLARSHIPS FOR OVERSEAS STUDENTS FROM OUTSIDE THE EUROPEAN UNION (EU)

- If you are studying on a foundation or undergraduate degree, you will receive a £1,500 scholarship in each year of your course. This scholarship isn't applicable to students within the East Region. Please contact your local office for the latest scholarship information
- Students on a postgraduate degree will receive a £1,000 scholarship in each year of their course. This scholarship isn't applicable to students within the East Region. Please contact your local office for the latest scholarship information
- To find out about scholarships that you may be entitled to, please contact your local office

SCHOLARSHIPS FOR OVERSEAS STUDENTS FROM THE EU

We have access to a selection of scholarships. Some of these will automatically awarded to you when you start but you will have to apply for others.



FULL INTERNATIONAL TUITION FEES FOR 2019/20

(FOR OVERSEAS STUDENTS OUTSIDE OF THE EUROPEAN UNION)

TYPE OF COURSES	2019/20	SCHOLARSHIP*	YOU PAY
Full-time Undergraduate	£11,500	£1,500	£10,000
Full-time Postgraduate – Tier 1 course	£12,500	£1,000	£11,500
Full-time Postgraduate – Tier 2 course	£13,000	£1,000	£12,000
Full-time Postgraduate – Tier 3 course	£13,500	£1,000	£12,500
MBA	£14,000	£1,000	£13,000
Research Fees	£4,190 to £12,250	£1,500 (only available to full-time, self-funding students who are based on campus)	Price on application
Study Abroad Undergraduate – 1 Semester	£4,250	No Scholarship	£4,250
Study Abroad Undergraduate – 2 Semesters	£8,500	No Scholarship	£8,500
Study Abroad Postgraduate – 1 Semester	£4,475	No Scholarship	£4,475
Study Abroad Postgraduate – 2 Semesters	£8,500	No Scholarship	£8,500
English for Academic Purposes University Preparation Course A	£3,600	No Scholarship	£3,600
English for Academic Purposes University Preparation Course B	£2,700	No Scholarship	£2,700
English for Academic Purposes University Preparation Course C	£1,800	No Scholarship	£1,800
English for Academic Purposes University Preparation Course D	£900	No Scholarship	£900

If you'd like to see fees and scholarships for EU students please visit our website:

For undergraduate students go to:
sunderland.ac.uk/ug/feesandfunding

For postgraduate students go to:
sunderland.ac.uk/pg/postgraduatefeesandfunding

*The scholarships listed in the table above do not apply to students from the East Region. Please contact your local office for the most up-to-date scholarship information.

QUALIFYING TO STUDY AT SUNDERLAND

OUR REQUIREMENTS FOR ENTRY AND ENGLISH LANGUAGE

ACADEMIC QUALIFICATIONS

The University recognises all internationally accredited qualifications. We will consider your application on its own merits and take into account other qualities you may have such as work and life experience.

- For an undergraduate degree course, you will need the equivalent of a minimum of two UK General Certificate of Education (GCE) Advanced Level passes. Please see individual course information on the website for more detail
- You can also apply for advanced entry to an undergraduate course (for example, level 2 or 3) if you have a diploma equivalent to one or two years of a UK honours degree in a relevant subject

For postgraduate courses you need to have a degree equivalent to a UK honours degree and, in some cases, relevant work experience.

ENGLISH LANGUAGE REQUIREMENTS

If English is not your first language, you will need to have achieved a score of 6 overall in the International English Language Testing Scheme (IELTS) with all element scores at 5.5 or higher. Please note: some courses require a higher level of English language – please read the relevant course description and particularly the course entry requirements.

We also accept Secure English Language Test (SELT) as recognised by the Home Office approved SELT provider. Your element scores need to be equivalent to those required for IELTS entry.

If you are applying for a Pre-sessional English Language course, you will need to have achieved a score of 4 or higher in IELTS for UKVI to be accepted on one of our pre-sessional courses. It must be from an approved UKVI test centre listed on the UKVI website: visit.gov.uk and search 'approved English language tests'.

Please note: not all English Language requirements are listed. To find out more, please call the Student Administration Team: +44 (0)191 515 3154.

HOW TO APPLY



MADE THE DECISION TO JOIN US? GREAT! HERE'S HOW YOU CAN MAKE IT HAPPEN.

You can either apply directly to the University via the online apply link on the course you are interested in or contact your local office or agent in your home country.

APPLYING DIRECTLY TO THE UNIVERSITY

1. Go to sunderland.ac.uk and search for your course, at the top of the course page click on 'Apply Now'.
2. Please click on the relevant button as a student outside of the UK/EU to apply.
3. Once you have completed this, you will be given a unique Personal ID number so you can be kept up-to-date with any developments in your application process. You can also contact our local office to assist you with your application.

HELP FOR STUDENTS WITH DISABILITIES OR SPECIFIC LEARNING DIFFICULTIES

Please call Student Support Services and we'll give you all the help you need:

Email: disability.support@sunderland.ac.uk
Call: +44 (0)191 515 2952

We encourage you to declare any health or wellbeing issues or disabilities, so we can support you in the best way, and decide whether any reasonable adjustments are required prior to you commencing your course.

APPLYING FOR A VISA TO STUDY IN THE UK

The UK Visas and Immigration (UKVI) rules are controlled by a Points-Based System (PBS). Tier 4 is specifically for students coming to the UK to study. All new non EEA/EU/Swiss National students wanting to study in the UK are required to apply for entry clearance under Tier 4.

To apply for a Tier 4 visa, you will require a Confirmation of Acceptance for Studies (CAS) letter together with the original copies of all supporting documents. CAS letters are only valid for six months and you cannot apply for a visa earlier than three months before your course starts.

Please note: CAS letters will only be issued once all conditions of offer are met.

WHEN YOUR VISA IS ISSUED

It will be to study at the University of Sunderland and will show the University's Sponsor Licence Number. If you wish to study at an alternative higher education institution in the UK, you will need to apply for and obtain a new visa for the institution concerned before you would be allowed to enrol.

Under the UKVI regulations, the University of Sunderland will be required to report any student who obtains entry clearance on the basis of our offer but does not enrol at the start of their programme. Students who enrol at the University of Sunderland but later decide to withdraw, interrupt or suspend their studies, or who fail to attend their classes for significant periods, will also be reported to the UKVI.

For more information about the immigration process:

UK Visas and Immigration: gov.uk/browse/visas-immigration/study-visas

UK CISA (Council for International Student Affairs): ukcisa.org.uk/

STUDY ABROAD

If you are coming to study on the course as part of your degree from an overseas institution, and the period of time that you will be studying in the UK is six months or more, you will need a Tier 4 (General) Student Visa. You will receive a Confirmation of Acceptance for Studies (CAS) letter which you will need to submit with your visa application.

If you are studying with us for one semester only then you can enter the UK as a Short Term Student. You don't need a Tier 4 (General) Student Visa to study with us for one semester. You may, however, need to obtain entry clearance or apply for your Short Term Student permissions before you come to study.

Please check the UKVI website for more information about visa requirements.

OUR COURSES

Our list of courses are taught at undergraduate or postgraduate level. A typical undergraduate degree usually takes three years to complete. However, if you have completed part of a bachelor degree elsewhere we offer advanced entry to a number of our courses. For more information please contact your local representative.

For more detailed information on any of the courses shown in this prospectus, visit our website and key in the web search code into the 'find a course' search on our homepage at sunderland.ac.uk

KEY

PC	Preparatory Course	CC	City Campus
UG	Undergraduate	STC	Sir Tom Cowie Campus
PG	Postgraduate		
IDL	Independent Distance Learning		

COURSE	LEVEL	WEB SEARCH CODE	COURSE LENGTH	LOCATION	COURSE PRICE
ART					
BTEC Diploma in Foundation Studies in Art and Design	PC	CID10	1 Year	STC	see page 46
BA (Hons) Art and Design Extended	UG	W908	4 Years	STC	see page 46
BA (Hons) Fine Art	UG	W100	3 Years	CC	see page 46
BA (Hons) Artist Designer Maker: Glass and Ceramics	UG	W260	3 Years	STC	see page 46
BA (Hons) Photography, Video and Digital Imaging	UG	W651	3 Years	CC	see page 46
MA Fine Art	PG	CID115	1 Year	CC	Tier 2*
MA Glass and Ceramics	PG	CID175	1 Year	STC	Tier 3*
MA Photography	PG	CID179	1 Year	CC	Tier 2*
BUSINESS					
BA (Hons) Accounting and Finance (Exempting)	UG	NN41	3/4 Years	STC	see page 46
BA (Hons) Accounting and Financial Management (Top-Up)	UG	NN43	1 Year – Twin Entry Oct/Jan	STC	see page 46
BA (Hons) Business and Economics	UG	NNE7	3 Years	STC	see page 46
BA (Hons) Banking and Finance (Top-Up)	UG	NN31	1 Year	STC	see page 46
BA (Hons) Business and Financial Management	UG	NN1H	3/4 Years	STC	see page 46
BA (Hons) Business and Human Resource Management (CIPD Accredited)	UG	NN1P	3/4 Years	STC	see page 46
BA (Hons) Business and Management	UG	NN2C	3/4 Years – Twin Entry Sept/Jan	STC	see page 46
BA (Hons) Business and Marketing Management	UG	NN1N	3/4 Years	STC	see page 46
BA (Hons) Business and Marketing (Top-Up)	UG	NNC5	1 Year	STC	see page 46
BA (Hons) Business Management (Top-Up)	UG	NNC2	1 Year – Twin Entry Oct/Jan	STC	see page 46
MA Integrated Marketing Communications	PG	CID1279	1 Year	STC	Tier 1*
MA Marketing	PG	CID674	1 Year	STC	Tier 1*
MBA (Business Administration)	PG	CID1130	1 Year – Twin Entry Oct/Mar	STC	**
MBA (Enterprise and Innovation)	PG	CID1292	1 Year	STC	**
MBA (Finance)	PG	CID1127	1 Year	STC	**
MBA (Hospitality Management)	PG	CID1028	1 Year	STC	**
MBA (Human Resource Management)	PG	CID1030	1 Year	STC	**
MBA (Supply Chain Management)	PG	CID1131	1 Year	STC	**

* For tier course prices, please see page 46.

** Please visit sunderland.ac.uk and search the course database using the web search code for the most up-to-date price.

COURSE	LEVEL	WEB SEARCH CODE	COURSE LENGTH	LOCATION	COURSE PRICE
MBA (Marketing)	PG	CID1029	1 Year	STC	**
MSc Digital Marketing and Data Analytics	PG	CID1287	1 Year	STC	Tier 1*
MSc Finance and Management	PG	CID1167	1 Year	STC	Tier 1*
MSc Human Resource Management (CIPD Accredited)	PG	CID125	1 Year	STC	Tier 1*
MSc International Business Management	PG	CID1280	1 Year	STC	Tier 1*
MSc Operations and Logistics Management	PG	CID1281	1 Year	STC	Tier 1*
Extended Award MA/MSc	PG	CID1278	15 Months	STC	**
COMPUTING					
BSc (Hons) Applied Business Computing (Top-Up)	UG	G424	1 Year	STC	see page 46
BSc (Hons) Business Technology	UG	G420	3/4 Years	STC	see page 46
BSc (Hons) Computer Science	UG	G401	3/4 Years	STC	see page 46
BSc (Hons) Computer Systems Engineering (Top-Up)	UG	G602	1 Year	STC	see page 46
BSc (Hons) Cybersecurity and Digital Forensics	UG	FG45	3/4 Years	STC	see page 46
BSc (Hons) Game Development	UG	GG46	3/4 Years	STC	see page 46
BSc (Hons) Networks and Cybersecurity	UG	G403	3/4 Years	STC	see page 46
BSc (Hons) Web and Mobile Development	UG	G400	3/4 Years	STC	see page 46
BSc (Hons) Network Systems (Top-Up)	UG	GH46	1 Year	STC	see page 46
MSc Artificial Intelligence and Machine Learning	PG	subject to approval	1 Year	STC	**
MSc Business Technology Management	PG	subject to approval	1 Year	STC	**
MSc Computer Networks and Cybersecurity	PG	subject to approval	1 Year	STC	**
MSc Computing	PG	CID128	1 Year	STC	Tier 2*
MSc Cybersecurity	PG	CID1267	1 Year	STC	Tier 3*
MSc Data Science	PG	CID1258	1 Year	STC	Tier 3*
DESIGN					
BA (Hons) Animation and Games Art	UG	W221	3 Years	CC	see page 46
BA (Hons) Fashion Design and Promotion	UG	WN25	3 Years	CC	see page 46
BA (Hons) Graphic Design (can also be taken as a 1 Year Top-Up)	UG	W214	3 Years	CC	see page 46
BA (Hons) Illustration and Design	UG	W215	3 Years	CC	see page 46
MA Design	PG	CID156	1 Year	CC	Tier 2*

* For tier course prices, please see page 46.
** Please visit sunderland.ac.uk and search the course database using the web search code for the most up-to-date price.

COURSE	LEVEL	WEB SEARCH CODE	COURSE LENGTH	LOCATION	COURSE PRICE
ENGINEERING					
BEng (Hons) Automotive Engineering	UG	H3WF	3/4 Years	STC	see page 46
BEng (Hons) Electronic and Electrical Engineering	UG	H601	3/4 Years	STC	see page 46
BEng (Hons) Electronic and Electrical Engineering (Top-Up)	UG	H600	1 Year	STC	see page 46
BEng (Hons) Manufacturing Engineering (Top-Up)	UG	H700	1 Year	STC	see page 46
BEng (Hons) Manufacturing Engineering	UG	H701	3/4 Years	STC	see page 46
BEng (Hons) Mechanical Engineering	UG	H3W2	3/4 Years	STC	see page 46
MEng Electronic and Electrical Engineering	UG	H604	4/5 Years	STC	see page 46
MEng Manufacturing Engineering	UG	H704	4/5 Years	STC	see page 46
MEng Mechanical Engineering	UG	H3W3	4/5 Years	STC	see page 46
MSc Advanced Maintenance Engineering	PG	CID1302	1 Year	STC	**
MSc Electronic Engineering	PG	CID1303	1 Year	STC	**
MSc Engineering Management	PG	CID158	1 Year	STC	Tier 2*
MSc Manufacturing Engineering	PG	CID1255	1 Year	STC	Tier 2*
MSc Mechanical Engineering	PG	CID1304	1 Year	STC	**
MSc Project Management	PG	CID133	1 Year	STC	Tier 2*
ENGLISH					
BA (Hons) English	UG	Q300	3 Years	STC	see page 46
BA (Hons) TESOL and English Language	UG	V302	3/6 Year	STC	see page 46
MA English Studies	PG	CID143	1/2 Years	STC	Tier 1*
ENVIRONMENT					
MSc Environment, Health and Safety	PG	CID153	1 Year	CC	Tier 2*
MSc Environment, Health and Safety	PG (FT)	CID876	1 Year	IDL	**
MSc Environment, Health and Safety	PG (PT)	CID876	2/3 Years	IDL	**
MSc Health, Safety and Wellbeing	PG	CID1246	1 Year	CC	Tier 2*
MSc Health, Safety and Wellbeing	PG	CID1301	1 Year	IDL	**
HEALTH AND CLINICAL SCIENCES					
BSc (Hons) Applied Biomedical Science	UG		3/4 Years	CC	see page 46
BSc (Hons) Biomedical Science	UG	B940	3/4 Years	CC	see page 46
BSc (Hons) Healthcare Sciences: Physiological Sciences/Life Sciences – Audiology or Cardiac	UG	CID1069	3 Years	CC	see page 46
BSc (Hons) Healthcare Sciences: Blood Science/ Cellular Science/ Genetic Science/Infection Science	UG	CID1069	3 Years	CC	see page 46

COURSE	LEVEL	WEB SEARCH CODE	COURSE LENGTH	LOCATION	COURSE PRICE
BSc (Hons) Physiological Sciences	UG	B120	3 Years	CC	see page 46
BSc (Hons) Public Health	UG	B910	3 Years	CC	see page 46
MSc Public Health	PG	CID722	1 Year	CC	Tier 2*
HISTORY					
BA (Hons) History	UG	V101	3 Years	STC	see page 46
BA (Hons) Politics and History	UG	V202	3 Year	STC	see page 46
MA Historical Research	PG	CID1261	1/2 Years	STC	see page 46
JOURNALISM AND PUBLIC RELATIONS					
BA (Hons) Fashion Journalism	UG	P507	3 Years	STC	see page 46
BA (Hons) Journalism	UG	P500	3 Years	STC	see page 46
BA (Hons) Sports Journalism	UG	P505	3 Years	STC	see page 46
BA (Hons) Social Media Management	UG	P508	3 Years	STC	see page 46
MA Magazine Journalism (NCTJ Accredited)	PG	CID920	1 Year	STC	Tier 1*
MA Journalism (NCTJ Accredited)	PG	CID921	1 Year	STC	Tier 1*
MA Public Relations (CIPR Accredited)	PG	CID986	1 Year	STC	Tier 1*
MA Sports Journalism (NCTJ Accredited)	PG	CID1075	1 Year	STC	Tier 1*
LANGUAGES					
BA (Hons) French and Spanish	UG	X345	3/4 Years	STC	see page 46
MA Teaching English to Speakers of Other Languages (TESOL)	PG	CID472	1/3 Years	STC	see page 46
MA Teaching English to Speakers of Other Languages (TESOL)	PG	CID625	18 Months	IDL	see page 46
LAW					
BA (Hons) Business Law (Top-Up)	UG	M221	1 Year	STC	see page 46
LL.B Law	UG	M100	3 Years	STC	see page 46
LL.M Commercial Law and International Trade	PG	CID1248	1 Year	STC	Tier 1*
LL.M Commercial Law and Procedure	PG	CID671	1 Year	STC	Tier 1*
LL.M Law	PG	CID1252	1 Year	STC	Tier 1*
LL.M International Human Rights	PG	CID925	1 Year	STC	Tier 1*
LL.M Legal Practice	PG	CID1254	1 Year	STC	**
MEDIA					
BA (Hons) Digital Film Production	UG	W612	3 Years	STC	see page 46
BA (Hons) Film and Media	UG	PW36	3 Years	STC	see page 46
BA (Hons) Mass Communications (Top-Up)	UG	P391	1 Year	STC	see page 46
BA (Hons) Media, Culture and Communication	UG	PP39	3 Years	STC	see page 46

* For tier course prices, please see page 46.
** Please visit sunderland.ac.uk and search the course database using the web search code for the most up-to-date price.

COURSE	LEVEL	WEB SEARCH CODE	COURSE LENGTH	LOCATION	COURSE PRICE
BA (Hons) Media Production	UG	HP63	3 Years	STC	see page 46
MA Film and Cultural Studies	PG	CID172	1 year	STC	Tier 1*
MA Media and Cultural Studies (dissertation stage only)	PG	CID351	4 Months	STC	**
MA Media Production (Film and Television)	PG	CID212	1 Year – Feb Entry	STC	Tier 2*
MA Radio	PG	CID352	1 Year	STC	Tier 2*
NURSING					
BSc (Hons) Nursing (Top-Up)	UG	B700	1 Year	CC	see page 46
BSc (Hons) Practice Development (Top-Up)	UG	L5P4	1 Year	CC	see page 46
MSc (Hons) Nursing	PG	CID1083	1 Year	CC	Tier 2*
PERFORMING ARTS					
BA (Hons) Music (Top-Up)	UG	W301	1 Year	CC	see page 46
BA (Hons) Performing Arts (can also be taken as a 1 Year Top-Up)	UG	W430	3 Years	CC	see page 46
BA (Hons) Screen Performance	UG	W600	3 Years	CC	see page 46
PHARMACY AND PHARMACEUTICAL SCIENCE					
BSc (Hons) Biochemistry	UG	C700	3/4 Years	CC	see page 46
BSc (Hons) Biopharmaceutical Science	UG	F100	3/4 Years	CC	see page 46
BSc (Hons) Cosmetic Science	UG	B3R5	3/4 Years	CC	see page 46
BSc (Hons) Medicinal Chemistry	UG	F150	3/4 Years	CC	see page 46
MPharm Pharmacy	UG	B230	4 Years	CC	see page 46
MSc Drug Discovery and Development	PG	CID995	1 Year	CC	Tier 2*
MSc/PgDip Pharmaceutical Sciences for the Overseas Pharmacist Assessment Programme	PG	CID1035	1 Year	CC	**
MSc Pharmaceutical and BioPharmaceutical Formulations	PG	CID1101	1 Year	CC	Tier 2*
PSYCHOLOGY					
BSc (Hons) Forensic Psychology	UG	C816	3 Years	CC	see page 46
BSc (Hons) Psychology	UG	C800	3 Years	CC	see page 46
BSc (Hons) Psychology with Clinical Skills	UG	C842	3 Years	CC	see page 46
BSc (Hons) Psychology with Counselling	UG	C8BX	3 Years	CC	see page 46
BSc (Hons) Psychology with Health and Wellbeing	UG	C841	3 Years	CC	see page 46
MSc Psychological Research Methods	PG	CID1108	1 Year	CC	Tier 2*
MSc Psychology	PG	CID210	1 Year	CC	Tier 2*

COURSE	LEVEL	WEB SEARCH CODE	COURSE LENGTH	LOCATION	COURSE PRICE
SOCIAL SCIENCES					
BA (Hons) Childhood Studies (0-11 yrs) (Non QTS)	UG	X310	3 Years	STC	see page 46
BA (Hons) Childhood Studies and Health and Social Care	UG	subject to approval	3 Years	STC	see page 46
BA (Hons) Community and Youth Work Studies	UG	L522	3 Years	STC	see page 46
BSc (Hons) Criminology	UG	M930	3 Years	STC	see page 46
BSc (Hons) Health and Social Care	UG	L510	3 Years	STC	see page 46
BA (Hons) Social Work	UG	L500	3 Years	STC	see page 46
BSc (Hons) Sociology	UG	L300	3 Years	STC	see page 46
Postgraduate Certificate in Early Years Teaching (Overseas)	CPD	CID1208	34 Weeks	IDL	**
MSc Practice Development	PG	CID1238	1 Year	STC	**
MA Social Work	PG	CID1191	2 Years	STC	**
SPORT AND EXERCISE SCIENCES					
BSc (Hons) Exercise, Health and Fitness	UG	C609	3 Years	CC	see page 46
BA (Hons) Physical Education and Sports Coaching	UG	C6G2	3 Years	CC	see page 46
BSc (Hons) Sports Coaching	UG	CX6C	3 Years	CC	see page 46
BSc (Hons) Sport and Exercise Sciences	UG	C601	3 Years	CC	see page 46
MSc Sport and Exercise Sciences	PG	CID1081	1 Year	CC	Tier 1*
TEACHER TRAINING AND EDUCATION					
Assessment Only Route to QTS	CPD	CID1099	Max 12 weeks	STC/IDL	see page 46
BA (Hons) Education and Curriculum Studies Top-Up)	UG	X410	1 Year	STC	see page 46
BA (Hons) Education Studies	UG	L9N8	3 Years	STC	see page 46
BSc (Hons) Mathematics Education (11-16 yrs) with QTS	UG	XG12	3 Years	STC	see page 46
BA (Hons) Modern Foreign Languages Education	UG	X330	3/4 Years	STC	see page 46
BSc (Hons) Physics with Mathematics (11-16 yrs) with QTS	UG	T53W	3/4 Years	STC	see page 46
BA (Hons) Primary Education with QTS	UG	X122	3 Years	STC	see page 46
MA Education (Generic)	PG	CID825	1 Year	STC	**
MA Education	PG	CID718	2/3 Years	IDL	Tier 1*
MA International Education	PG	CID1033	3 Years	IDL	**
PGCE Post Compulsory Education and Training (PCET)	PG	X341	1 Year	STC	**
PGCE Postgraduate Certificate in Education (Overseas)	PG	CID1032	36 Weeks	IDL	**

* For tier course prices, please see page 46.
** Please visit sunderland.ac.uk and search the course database using the web search code for the most up-to-date price.

COURSE	LEVEL	WEB SEARCH CODE	COURSE LENGTH	LOCATION	COURSE PRICE
PGCE Postgraduate/Professional Certificate in Education – School Direct Route also available in the subjects listed below:					
Business with QTS	PG	N1X1	1 Year	STC	**
Science with Biology with QTS	PG	C1X1	1 Year	STC	**
Science with Chemistry with QTS	PG	F1X1	1 Year	STC	**
Computer Science with QTS	PG	IX99	1 Year	STC	**
English with QTS	PG	Q3X1	1 Year	STC	**
Geography with QTS	PG	F8X1	1 Year	STC	**
Mathematics Education with QTS	PG	G1X1	1 Year	STC	**
Science with Physics with QTS	PG	F3X1	1 Year	STC	**
Primary Education with QTS	PG	X100	1 Year	STC	**
Subject Knowledge Enhancement (SKE) courses are perfect for applicants who have a degree which is not specific to the subject you want to teach. These courses prepare you for Initial Teacher Training by helping you gain the in-depth subject knowledge and skills required to be able to teach your chosen subject. You may also be eligible for a SKE bursary to help with living costs whilst studying the course.	PC	Computer Science – CID1202 Science – CID511 Mathematics – CID751	8 – 28 Weeks	Online /STC	**
TOURISM					
BA (Hons) Events Management	UG	N820	3/4 Years	STC	see page 46
BSc (Hons) International Tourism and Hospitality Management	UG	NN28	3/4 Years	STC	see page 46
BSc (Hons) International Tourism and Hospitality Management (Top-Up)	UG	NN82	1 Year – Twin Entry Sept/Jan	STC	see page 46
BSc (Hons) Tourism and Aviation Management	UG	subject to approval	3/4 Years	STC	see page 46
BSc (Hons) Tourism Management	UG	N802	3/4 Years	STC	see page 46
MSc Tourism and Aviation	PG	CID1312	1 Year	STC	Tier 1*
MSc Tourism and Events	PG	CID916	1 Year	STC	Tier 1*
MSc Tourism and Hospitality	PG	CID919	1 Year	STC	Tier 1*

OUR LOCATIONS

SUNDERLAND, UK

UNIVERSITY OF SUNDERLAND

1st Floor, The Gateway
City Campus, Chester Road
Sunderland, SR1 3SD
United Kingdom

Tel: +44 (0)191 515 3000

Email: international.enquiries@sunderland.ac.uk
sunderland.ac.uk

**THE ABOVE OFFICE COVERS MIDDLE EAST,
NORTH AFRICA, CENTRAL ASIA, AMERICAS,
STUDY ABROAD AND EXCHANGE.**

LONDON, UK

UNIVERSITY OF SUNDERLAND IN LONDON

197 Marsh Wall
Docklands
London, E14 9SG
United Kingdom

Tel: +44 (0)20 7531 7333

Email: recruitment-london@sunderland.ac.uk
london.sunderland.ac.uk

HONG KONG, CHINA

UNIVERSITY OF SUNDERLAND IN HONG KONG

9/F South China Building
1-3 Wyndham Street
Central Hong Kong

Tel: +852 2992 0133

Email: enquire@sunderland.edu.hk
sunderland.edu.hk

Contact the University in your home country.
If your home country is not listed, please contact
us direct at one of the relevant locations above.

**FOR THE UNIVERSITY
OF SUNDERLAND'S FULL
TERMS AND CONDITIONS
RELATING TO THIS
PROSPECTUS
PLEASE VISIT:**

Sunderland.ac.uk/terms-and-conditions/